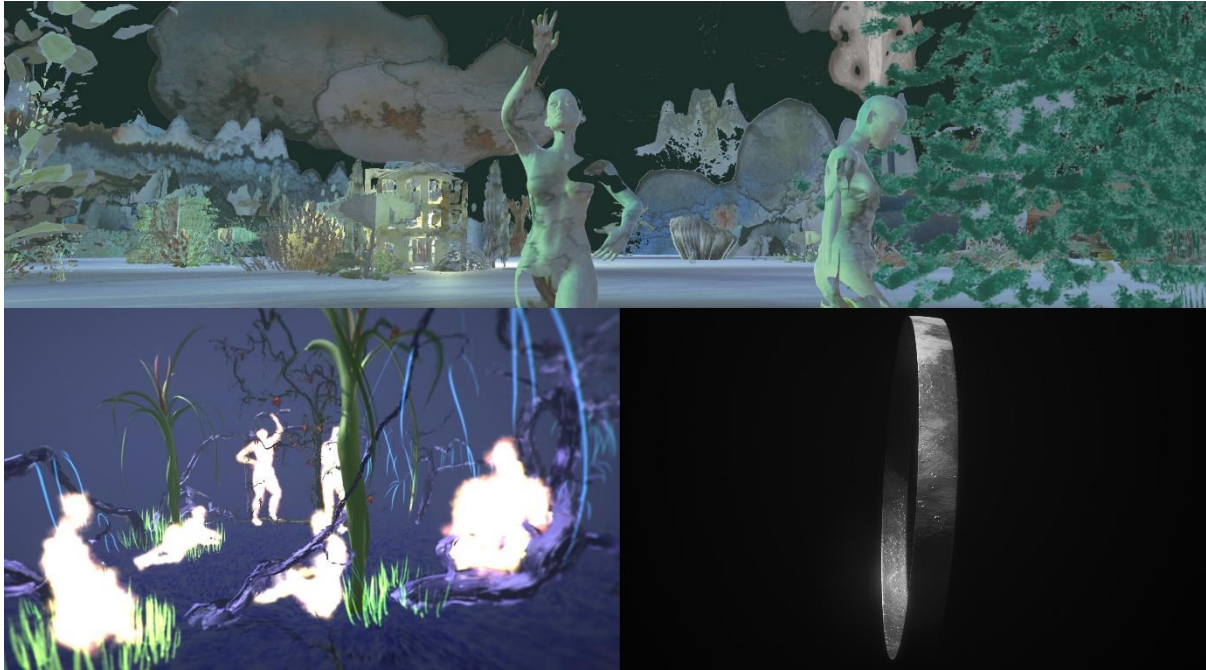


UNCHARTED TERRITORIES

Patricia Detmering, Armin Keplinger, Tamiko Thiel

On view for immersiVR: September 28th, 2020 - February 20th, 2021



Top: Patricia Detmering, *APORIA*, 2020 – bottom, left to right: Tamiko Thiel, *Land of Cloud*, 2018; Armin Keplinger, *ms-R*, 2019

The exhibition '**Uncharted Territories**' – synthesis' first on headset for **immersiVR** – features a group of artists whose work engage with physical and metaphysical spaces, and issues of integration, identity and place. The '*Uncharted Territories*' are Elias Canetti's inspired playground, the so-called *Land of Cloud* and a thin moon strip. Territories yet to be discovered, lands of exploration and social experimentation.

Patricia Detmering (b. 1980, DEU) in her work **APORIA**, designs a virtual space where power dynamics interlace and overlap, change and dissolve, yet seem to balance out organically. The residents of APORIA (i.e. human avatars driven by Artificial Intelligence algorithms) find harmony in the same unwritten rules they follow when engaging and interacting with each other. Until a *disturbing factor* - a new human avatar, a stranger – arrives to alter the pre-established order. Detmering draws on Elias Canetti's seminal work '*Crowds and Power*' to create a social playground for experimental dynamics of integration and cointegration, separation and insularity, tolerance and prejudice.

Armin Keplinger (b. 1982, AUT) merges virtual and physical space in **ms-R**. The artwork features a moon-sliced ring with zero latitude. Inspired by the striking images of the *Apollo 13* mission, Keplinger's artistic effort is aimed at building a bridge between the moon's historically changing surface and his fascination for ever-changing physical sculpture surfaces. As the ring moves slowly in a circle around the participant's view with subtle light and movements, '*ms-R*' aims to send the viewer on a journey to void-dark spaces. In his physical and virtual sculptures, Keplinger is inspired by American minimalism and its European precursors, including landmark figures such as Richard Serra, Donald Judd and Josef Albers.

VR/AR pioneer **Tamiko Thiel** (b. 1957, USA), in her work *Land of Cloud* takes the viewer on a journey beyond space and time. That is where the *Land of Cloud* can be found. The *Land of Cloud* is a magnificent garden whose inhabitants are silent and communicate with each other only through splendid, yet strange, *cloud mirrors*. They are in constant contact with their deity: 'The Cloud'. They do not look at you. They do not look at anything but their devices, standing motionless. Each of them susurrates and repeats their own mantra, given by the Cloud Deity. This is what the viewer hears as she stands next to them. The mantras are taken from the Hillary Clinton vs. Donald Trump 2016 US election campaign, when it seemed to Thiel that national and personal dialogs with others had ceased and each focused only on their own small media bubble.

synthesis gallery is the leading VR-based art gallery: an immersive blend of technology and art displayed under one roof, showcasing cutting-edge experiences by new wave artists and visionaries through virtual reality. Founded in New York in October 2017 by George Vitale, the gallery opened its doors to the public in April 2018 in Berlin. Pieces are displayed through different media. Tangible and traditional art forms intermingle with Oculus and Vive headsets. Dedicated to exhibiting internationally renowned, well-established artists alongside emerging ones, since its inception, synthesis has garnered considerable attention in the art scene.

Exhibition: September 28th, 2020 – February 20th, 2021

Get your headset at: <http://invr.space/immersivr>

Join the discussion about the exhibition online at:

Instagram: [@synthesis.gallery](https://www.instagram.com/synthesis.gallery)

Facebook: [synthesis gallery](https://www.facebook.com/synthesis.gallery)

Website: [synthesis.gallery](https://www.synthesis.gallery)